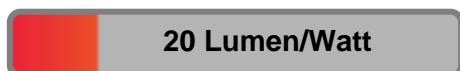


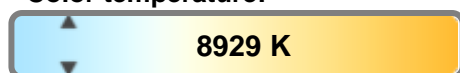
Light efficiency:



Light quality:



Color temperature:

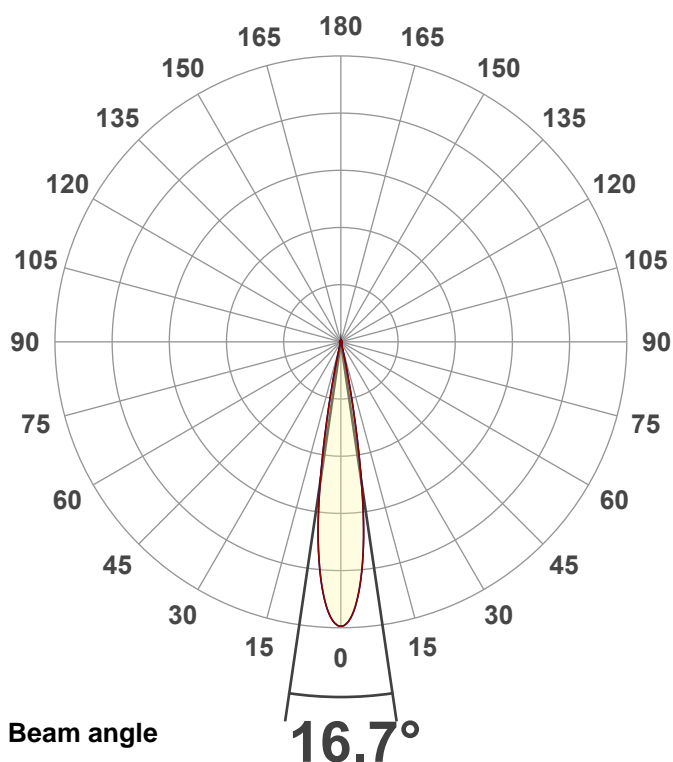


Output: 16942 lm
Peak: 130272 cd
Power: 832 W
PF: 1.0



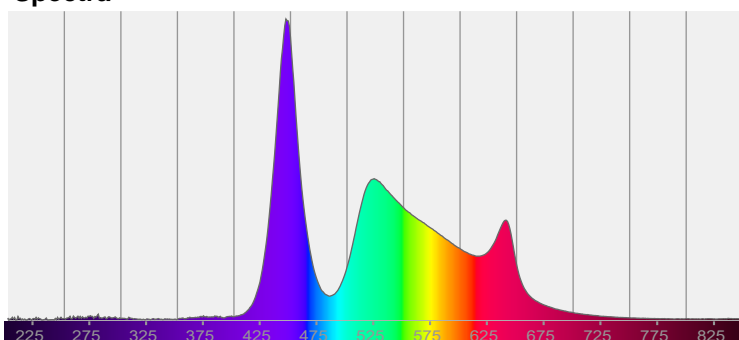
Product name:
Hydro Flex L19 (Zoom 50% 10000K)
Item number:

Date and time:
9/8/2025 10:19:57 AM

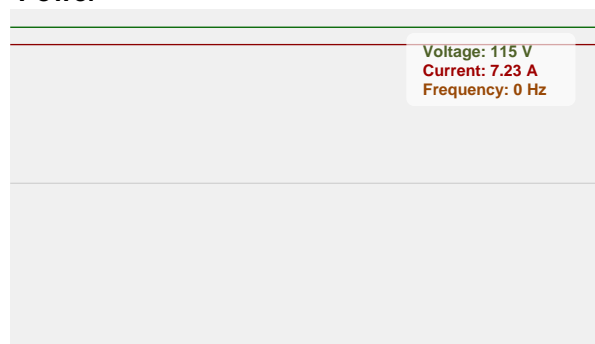


CIE 1931
x: 0.286
y: 0.300

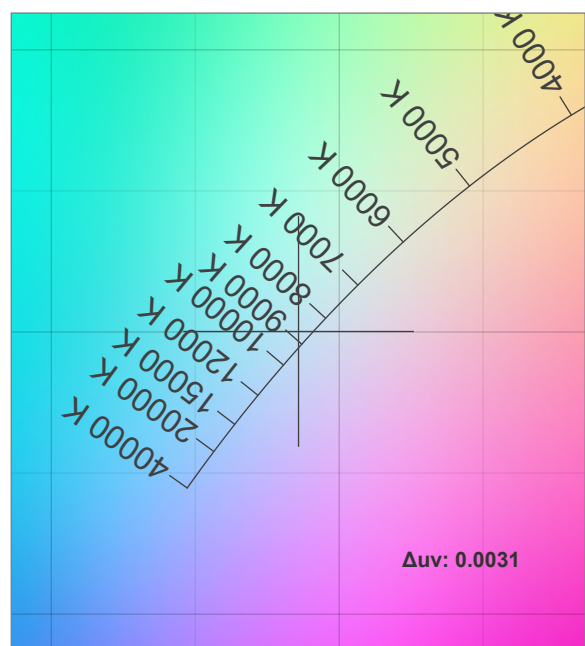
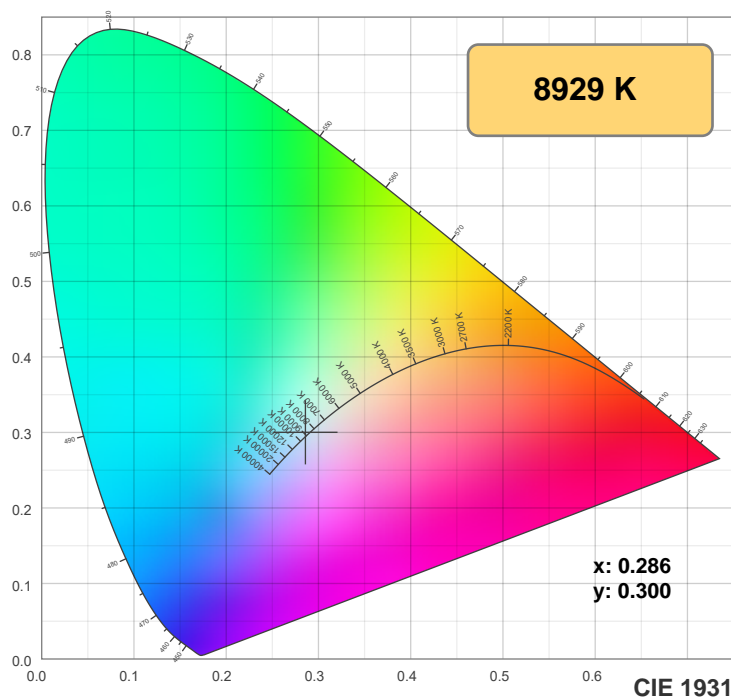
Spectra



Power

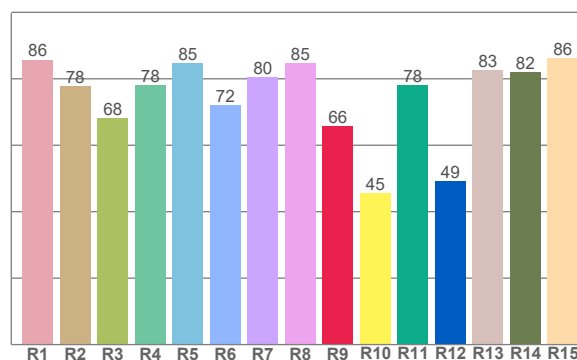
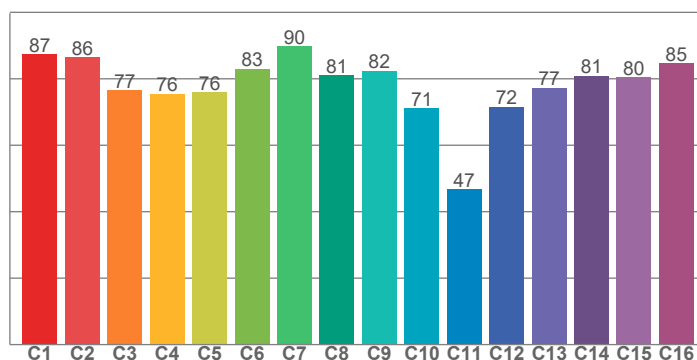


Color details



TM-30: 78.2

CRI: 78.9 (R1-R8)



CRI R values, only R1-R8 are used to calculate final CRI value

R1	R2	R3	R4	R5	R6	R7	R8	R9	R10	R11	R12	R13	R14	R15
85.7	77.8	68.1	78.1	84.6	72.1	80.4	84.7	65.7	45.5	78.1	49.3	82.6	82.0	86.2

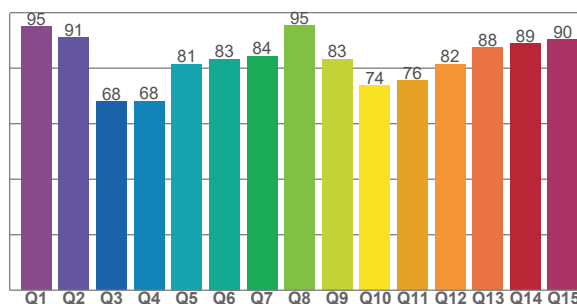
TM30 C values, 16 binned values out of total of 99 C values

C1	C2	C3	C4	C5	C6	C7	C8	C9	C10	C11	C12	C13	C14	C15	C16
87.5	86.5	76.6	75.5	75.9	83.0	89.8	81.1	82.4	71.2	46.7	71.5	77.3	80.9	80.4	84.7

CQS Q values

Q1	Q2	Q3	Q4	Q5	Q6	Q7	Q8	Q9	Q10	Q11	Q12	Q13	Q14	Q15
95.1	91.0	68.0	68.2	81.4	83.3	84.4	95.4	83.3	73.8	75.6	81.6	87.5	88.9	90.4

CQS: 81.2



Color parameters

Color temperature	Color rendering index	Red component	Color fidelity	Color gamut	Color quality scale	Color coordinate cie 1931	Color coordinate cie 1931	Color coordinate	Color coordinate	Color deviation from black body
CCT	CRI	CRI R9	TM30 Rf	TM30 Rg	CQS	x	y	u	v	Δuv
8929 K	78.9	65.7	78.2	102.2	81.2	0.286	0.300	0.190	0.299	0.0031

TM-30 details

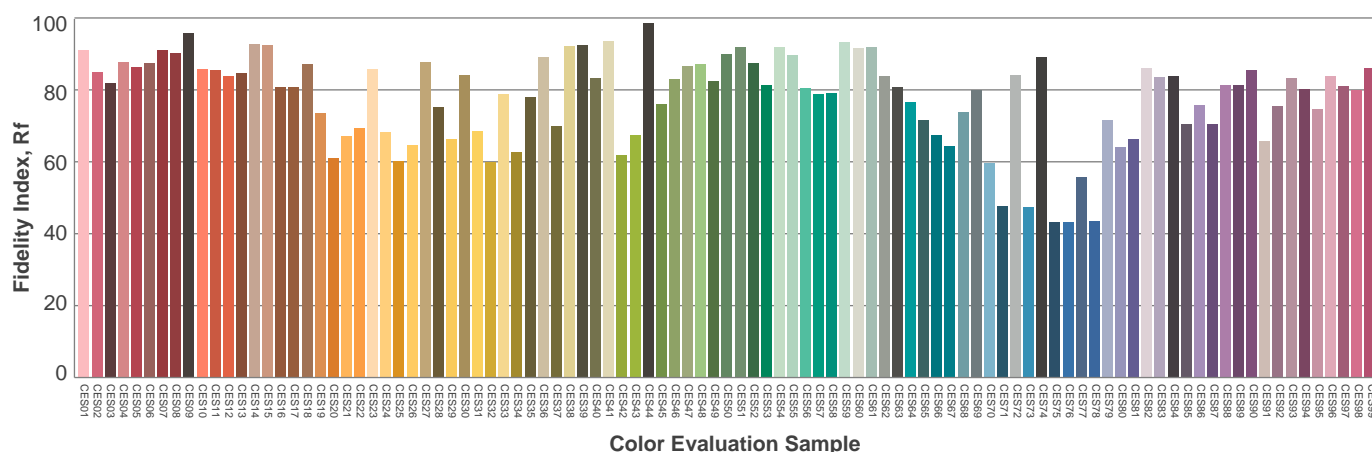
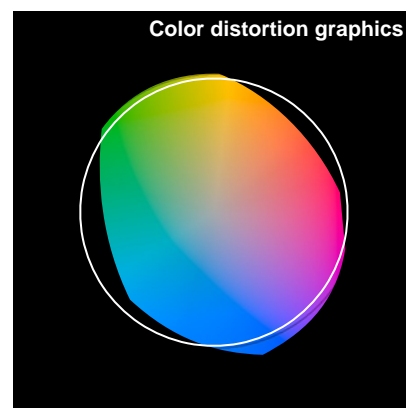
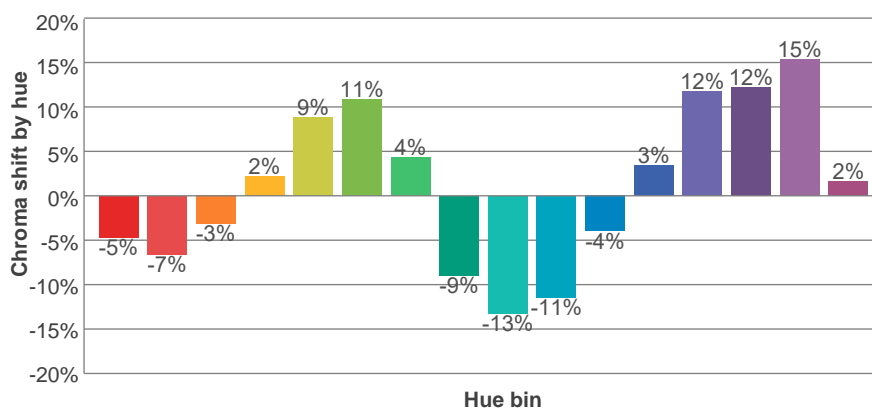
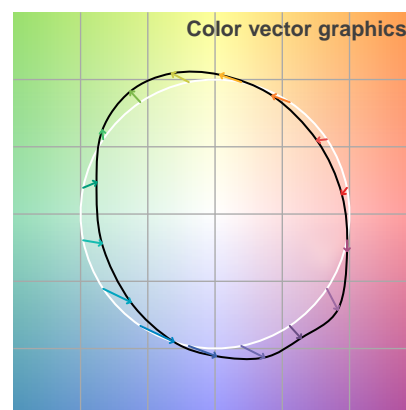
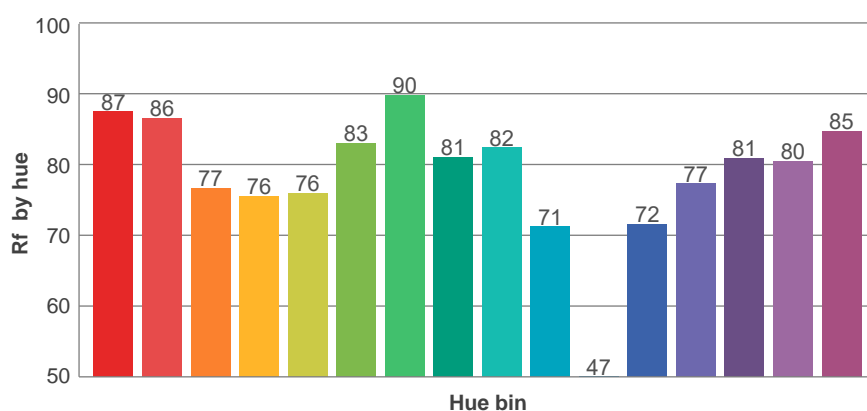
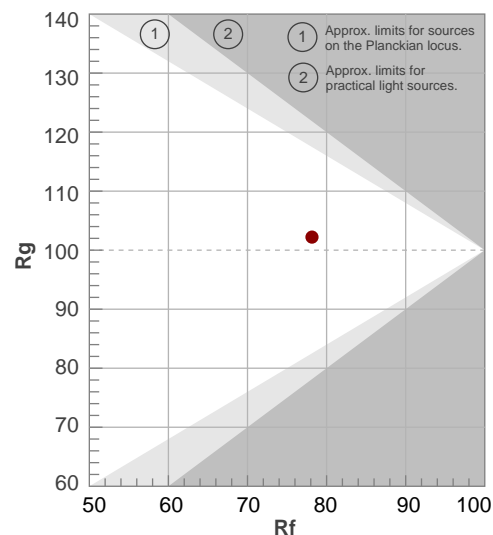
Rf 78.2

Fidelity index Rf

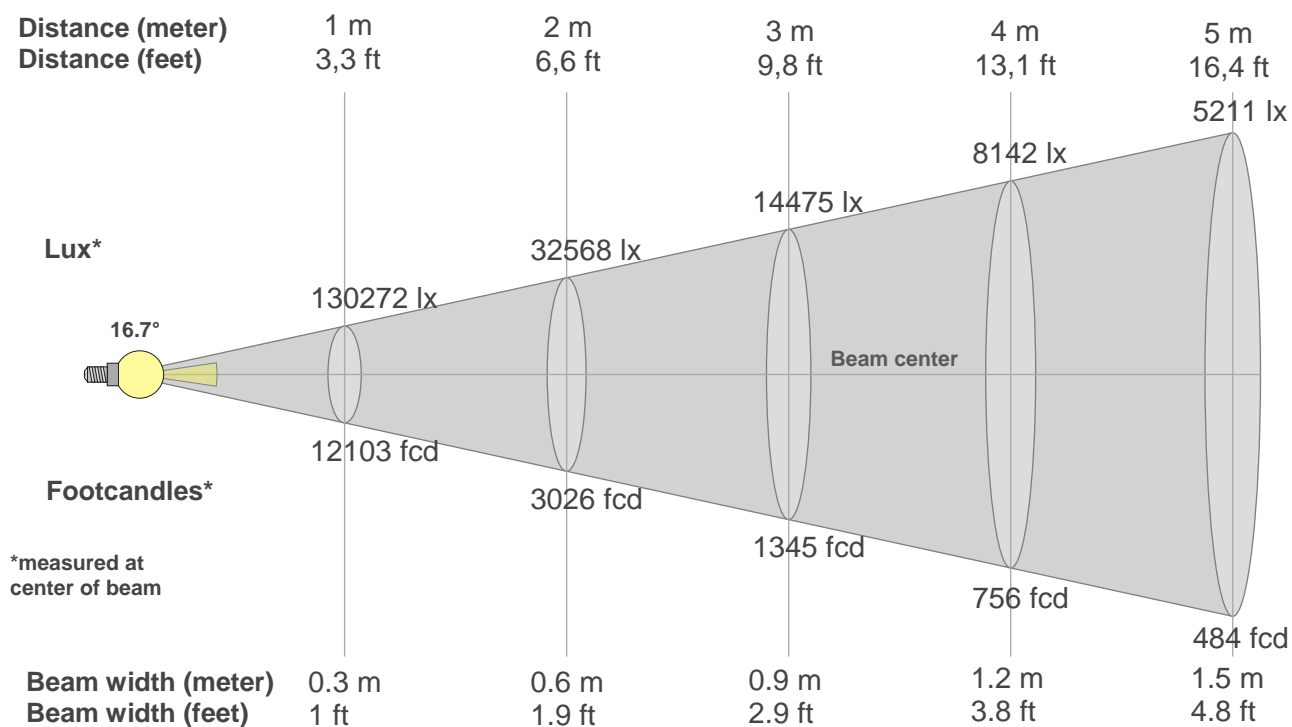
Rg 102.2

Gamut index Rg

Hue Bin	R _f	Shifts (%)	
		Chroma	Hue
1	87	-5%	-4%
2	86	-7%	3%
3	77	-3%	13%
4	76	2%	16%
5	76	9%	11%
6	83	11%	2%
7	90	4%	-5%
8	81	-9%	-6%
9	82	-13%	5%
10	71	-11%	20%
11	47	-4%	27%
12	72	3%	21%
13	77	12%	15%
14	81	12%	2%
15	80	15%	-8%
16	85	2%	-8%



Beam details



Beam intensities from 1-20m

1m	2m	3m	4m	5m	6m	7m	8m	9m	10m	11m	12m	13m	14m	15m	16m	17m	18m	19m	20m
3.3ft	6.6ft	9.8ft	13.1ft	16.4ft	19.7ft	23ft	26.2ft	29.5ft	32.8ft	36.1ft	39.4ft	42.7ft	45.9ft	49.2ft	52.5ft	55.8ft	59.1ft	62.3ft	65.6ft
130272lx	32568lx	14475lx	8142lx	5211lx	3619lx	2659lx	2035lx	1608lx	1303lx	1077lx	905lx	771lx	665lx	579lx	509lx	451lx	402lx	361lx	326lx
12102.6fcd	3025.7fcd	1344.7fcd	756.4fcd	484.1fcd	336.2fcd	247fcd	189.1fcd	149.4fcd	121fcd	100fcd	84fcd	71.6fcd	61.7fcd	53.8fcd	47.3fcd	41.9fcd	37.4fcd	33.5fcd	30.3fcd

Intensities in 0° c-plane

0°	1°	2°	3°	4°	5°	6°	7°	8°	9°	10°	11°	12°	13°	14°	15°	16°	17°	18°	19°
130k	129k	127k	122k	116k	107k	97k	85k	71k	55k	38k	24k	13k	6k	3k	1k	1k	1k	1k	1k
100%	99%	97%	94%	89%	82%	75%	66%	54%	42%	30%	19%	10%	5%	2%	1%	1%	1%	1%	1%

Intensities in 90° c-plane

0°	1°	2°	3°	4°	5°	6°	7°	8°	9°	10°	11°	12°	13°	14°	15°	16°	17°	18°	19°
130k	129k	127k	122k	116k	107k	97k	85k	71k	55k	38k	24k	13k	6k	3k	1k	1k	1k	1k	1k
100%	99%	97%	94%	89%	82%	75%	66%	54%	42%	30%	19%	10%	5%	2%	1%	1%	1%	1%	1%

Intensities in 180° c-plane

0°	1°	2°	3°	4°	5°	6°	7°	8°	9°	10°	11°	12°	13°	14°	15°	16°	17°	18°	19°
130k	129k	127k	122k	116k	107k	97k	85k	71k	55k	38k	24k	13k	6k	3k	1k	1k	1k	1k	1k
100%	99%	97%	94%	89%	82%	75%	66%	54%	42%	30%	19%	10%	5%	2%	1%	1%	1%	1%	1%

Intensities in 270° c-plane

0°	1°	2°	3°	4°	5°	6°	7°	8°	9°	10°	11°	12°	13°	14°	15°	16°	17°	18°	19°
130k	129k	127k	122k	116k	107k	97k	85k	71k	55k	38k	24k	13k	6k	3k	1k	1k	1k	1k	1k
100%	99%	97%	94%	89%	82%	75%	66%	54%	42%	30%	19%	10%	5%	2%	1%	1%	1%	1%	1%

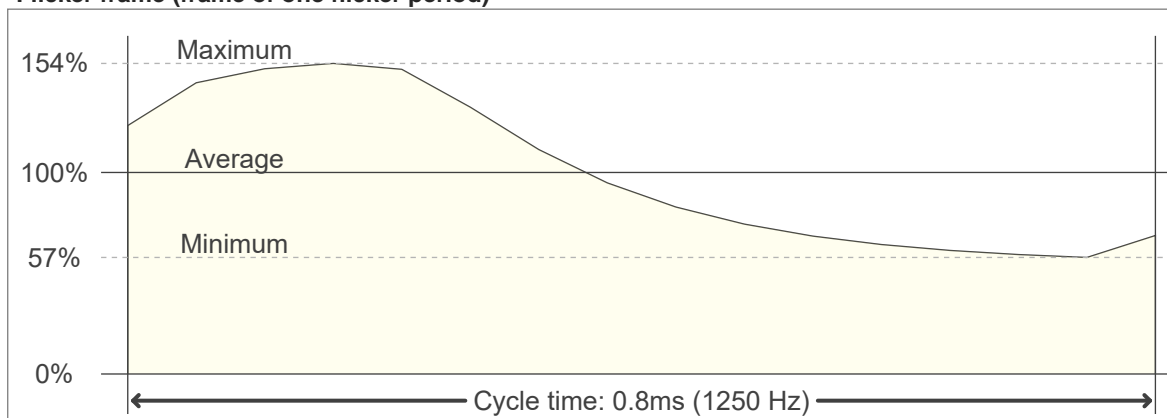
Beam angle 50%	Field angle 10%	Cutoff angle 2,5%	Intensity ratio in 120° cone	Intensity ratio in 90° cone
16.7°	24.1°	27.6°	67.2%	62.1%

Flicker

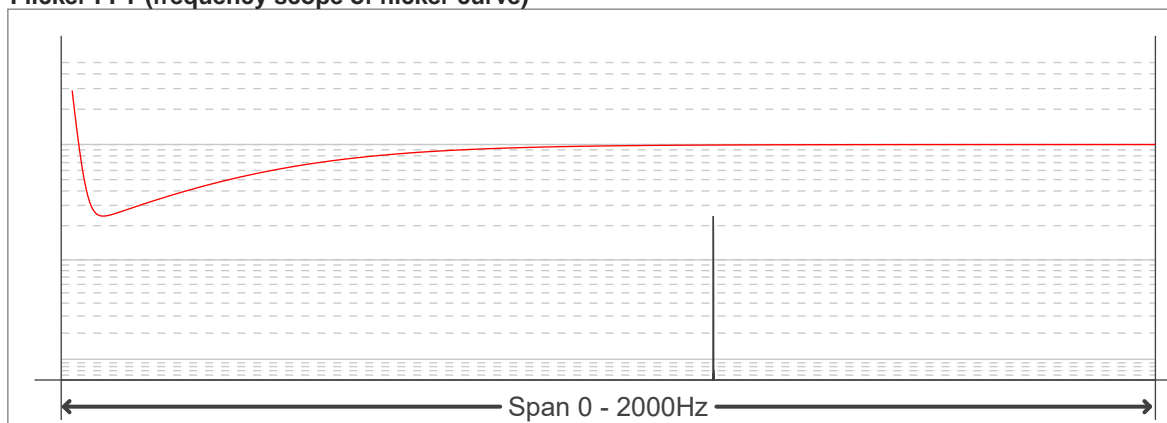
Flicker curve (complete sampled flicker signal)



Flicker frame (frame of one flicker period)



Flicker FFT (frequency scope of flicker curve)



Flicker results:

Flicker frequency:		1250 Hz	
Flicker index:	0.17	JA8/10 40Hz	0.14 %
Flicker percentage:	47.88 %	JA8/10 90Hz	0.23 %
SVM: (Visual flicker)	0.49	JA8/10 200Hz	0.48 %
PstLM	0	JA8/10 400Hz	1.03 %
Mp	0.06	JA8/10 1000Hz	5.47 %

Flicker conditions:

Sample rate:	20000 samples/second
--------------	----------------------